



RailPro HC Simulator Software

User Manual

Table of Contents

.....	2
<i>Introduction</i>	3
<i>Getting Started / Setup</i>	3
Download HC Simulator Software to your Computer.....	3
Start the RailPro HC Simulator Software.....	5
Setup the RailPro Assistant Software.....	5
Using the Software.....	5

WARNING: Ring Engineering believes that our software is compatible with most computers. Because of the vast amount of different computers and configurations possible, Ring Engineering does not guarantee that our software is compatible with your particular computer. We recommend backing up any important documents or pictures, etc. before installing or using Ring Engineering software. We make reasonable efforts to be sure that our software and hardware works well and does not interfere or damage any of the programs or data on your computer. We have an outstanding record of not having any issues with loss of data but because of the vast array of computers, configurations, etc, it is impossible for any company to absolutely guarantee that you will never loose data or cause other problems from installing or using new software. Ring Engineering is not responsible for any damages to your computers software programs or data that may occur from using our software.

Introduction

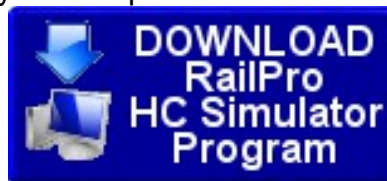
The RailPro HC simulator software is a program for your computer that will draw a RailPro HC-2 on your personal computer screen and allow you to control and setup RailPro modules like the RailPro locomotive modules! You can do every thing with the HC Simulator that you can with a real HC-2 handheld controller! All you need is the low cost [CI-1 Computer Interface](#) module to add Direct Radio to your computer. The CI-1 Computer Interface plugs into a USB port on your computer.

Getting Started / Setup

Download HC Simulator Software to your Computer

IMPORTANT: Before installing software be sure you are an Administrator or logged in with Administrator privileges.

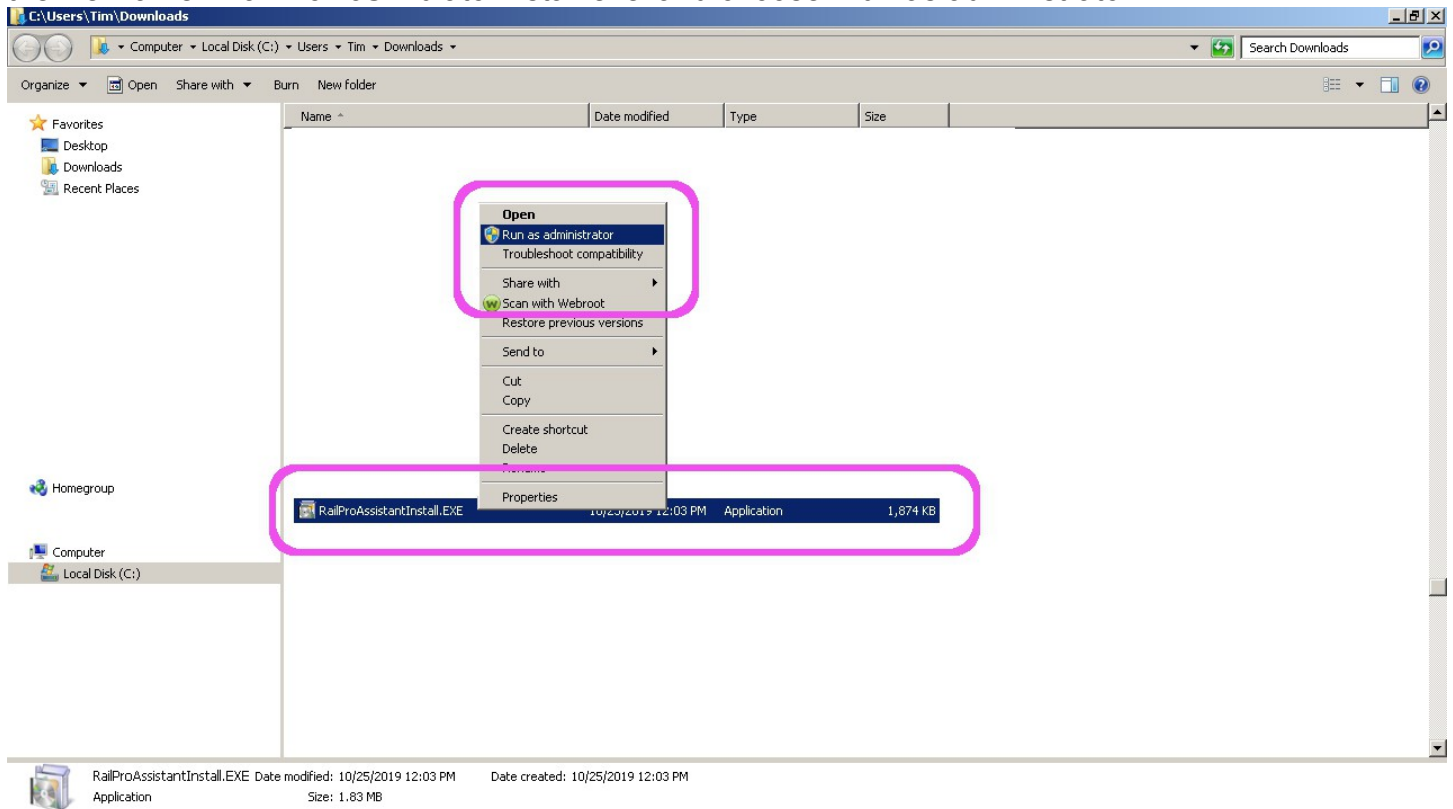
Use your computers browser and go to www.RingEngineering.com. Then go to the RailPro Software page and choose HC Simulator Software. Press the button like the one below to begin loading the RailPro HC Simulator software onto your computer.



Using Chrome Browser Example Below.

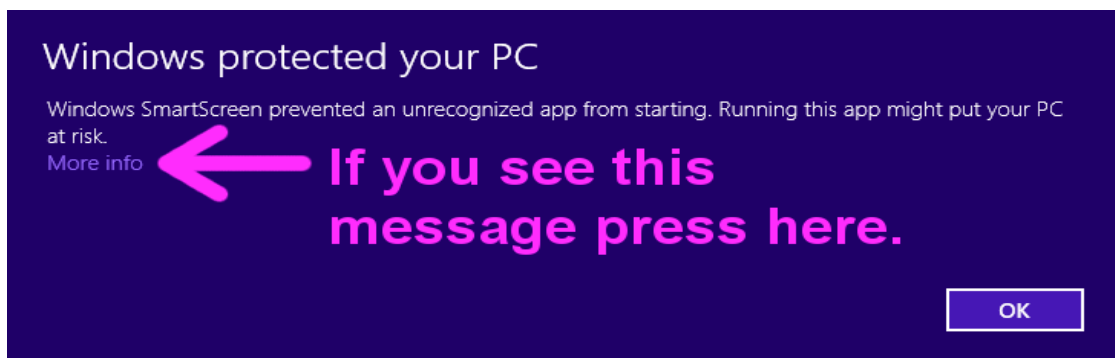
A screenshot of a Chrome browser window. The address bar shows "ringengineering.com/RailProAssistantSoftware.htm". The page content includes a "Computer Monitor Not Included" warning, a description of the software, a "Price \$FREE" label, a "DOWNLOAD RailPro Assistant Program" button, and PC requirements. A file explorer window is open in the bottom left, showing "RailProAssistantInstall.EXE" selected. The browser's taskbar at the bottom shows the file name "RailProAssistantInstall.EXE".

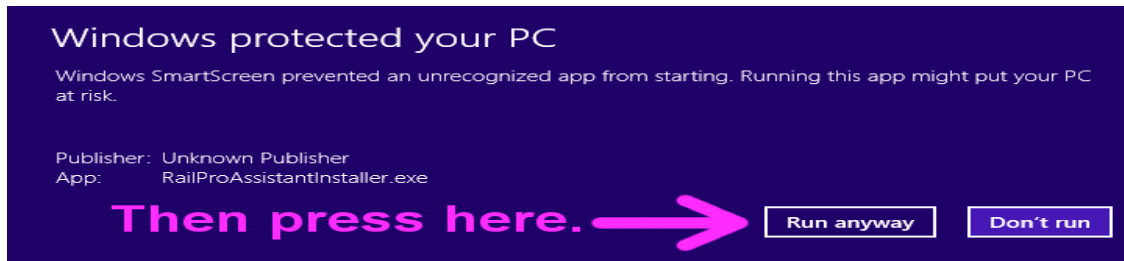
When the installer program file finishes loading, then click on the 'arrow' to the right of RailProHcSimulatorInstall.exe name and choose 'show in folder'. In the folder view Right Click on the file Name ' RailProHcSimulatorInstall.exe' and choose 'Run as administrator'.



After that, you very likely will see a warning from your Internet Security software on your computer that will likely state that the program may be a virus and will ask if you should allow it. You must choose 'Allow' for any Internet Security software questions related to RailPro Software or the RailPro Software will either not install or not function properly. Next you will be asked if you ran the program as Administrator. You need to answer 'Yes' to install. Then you should see a RailPro Software license agreement. You must choose the option 'Yes' for the software to install. If you choose 'No,' then the RailPro Software will not be installed on your computer.

In some cases windows may put up the following message that appears to have no option to continue installation. If you see press the messages like below press "More Info" then "Run Anyway".





When the software finishes installing, you should see a new shortcut on your computers desktop to start the RailPro Assistant Software.



Start the RailPro HC Simulator Software

To start the RailPro HC Simulator program, double click on the RailPro HC Simulator icon on your computers Desktop.

Setup the RailPro Assistant Software

You should press the Adjust Settings Button from the main page and give the Simulator a unique Name. Each handheld you have should be given a unique name so you can tell them apart. For example you could give it a name like Bob's PC.

Using the Software

Since the HC Simulator basically does every thing a real HC-2 (handheld controller) does, please see the HC-2 User Manual for instructions.

<http://www.ringengineering.com/RailPro/Documents/HC-2UsersManual.pdf>

IMPORTANT: Use the mouse wheel to simulate turning the handheld controller knob. The mouse wheel is used to set the locomotive speed and change the slider value for adjustments. Since the typical wheel mouse has much less resolution than a real RailPro Handheld controller knob, the wheel mouse sets locomotive speed in 1% increments for 100 total speed steps. A real RailPro Handheld controller sets speed steps in 0.1% increments for 1000 total speed steps.

TIP: Some features in the HC Simulator software have no effect. The Power Off button, settings for the Auto Power Off, and Screen Brightness adjustment have no effect in the HC Simulator software. These features work on a real RailPro Handheld controller.